



## Mayor's Message

It is often said that it takes 10,000 hours of practice to master a skill. In early September the Town hosted a BBQ for many of the seniors. It was a very positive gathering and included many of the leaders and builders of this community we call home.

These are the folks who ran the Lions Club, Legion, hospital auxiliary, school PACs, coaching, church groups, etc. and the thing so many have in common is the commitment to volunteering over their life times.

They may not be at 10,000 hours but they all started with 1, then 10, then 100 and so on.

It's never too late to contribute your time and wisdom.

For me the highlight of the day was Robin, who numerically may be a senior, but lives and thrives like a youth. He came to ensure that some of his less mobile friends received a burger delivery to their homes.

That's the result of over 10,000 hours of being a decent human. And he is a pro.

James J Furney

## Town Office Hours

OPEN: 8:30am-4:30pm, Monday to Friday

Phone: 250-956-3111

For emergencies after hours call 250-956-4521

## Harbour Office & Visitor Center Hours

OPEN: 9:00am- 4:30pm Monday to Friday

Offices are closed 12:00-1:00pm

Phone: 250-956-3881

Both Offices will be closed October 2 & 9, 2023

## Meetings in October

### Committee of the Whole

October 3, 2023

Committee of the whole meeting held in the Council Chambers at 9:00am

### Regular Meeting of Council

October 10, 24, 2023

Regular meeting held in the Council Chambers at 7:00pm

## Live Music

Do you remember these guys? They were here two years ago and played to a full house!

If you Like Eagles Music don't miss this show!

Licensed event, October 21, 2023 doors open 7:30pm, show at 8:00pm

Tickets on Eventbrite or our website



[www.gatehouseca.org](http://www.gatehouseca.org)



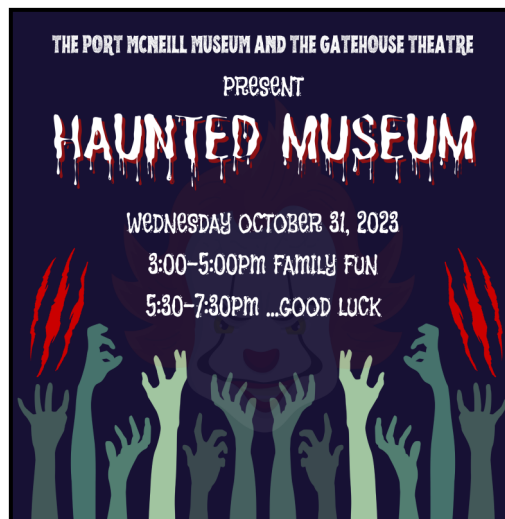
## Pickleball Sports Programs

Pickleball on Tuesday, Thursday, and Saturdays at Old School Gym

To check out or sign up for our free McNeill Pickleball or Port Hardy/ Port McNeill Tennis.

Email at

[pickleinmcneill@gmail.com](mailto:pickleinmcneill@gmail.com)



Wild Heart Music Presents:

## JUNIOR CHOIR

SEPT. 21ST - NOV. 30TH  
Every Thursday

5:30 PM - 6:30 PM

7 +

A-Frame Church  
175 Cedar Street,  
Port McNeill, BC

December 1st - Performance

Join us, have fun and learn how to sing!

Wild Heart Junior Choir  
*a.k.a "The Junior Singing Sessions"*

Cost \$150 for all 12 sessions  
(financial assistance is available)

Sign up today:  
 (250) 956-3533  
 [info@wildheartmusic.org](mailto:info@wildheartmusic.org)  
 [wildheartmusic.org](http://wildheartmusic.org)

## Recycling pick-up days

## Garbage pick-up days

Serving the North Island since 1970.

October						
S	M	T	W	T	F	S
1	2	3	4	5	6	7
8	9	10	11	12	13	14
15	16	17	18	19	20	21
22	23	24	25	26	27	28
29	30	31				

Wild Heart Music Presents:

## THE SINGING SESSIONS

SEPT. 21ST - NOV. 30TH  
Every Thursday

7:00 PM-9:00 PM

14 +

A-Frame Church  
175 Cedar Street,  
Port McNeill, BC

December 1st - Performance

Come and share your heart and voice under the direction of Chelsea Edwardson!

Wild Heart Adult Choir  
*a.k.a "The Anti Choir Choir"*

Cost \$250 for all 12 sessions  
(financial assistance is available)

Sign up today:  
 (250) 956-3533  
 [info@wildheartmusic.org](mailto:info@wildheartmusic.org)  
 [wildheartmusic.org](http://wildheartmusic.org)



"Subterranean" documentary screening

Date: Fri, Oct 20th, 7:00pm  
Location: Gate House Theatre



Sneak peek at a new film featuring local cavers from Port McNeill! Subterranean follows two gritty teams of cave explorers poised to break records for the longest and deepest caves in Canada. Digging into the oddly fascinating world of underground exploration *Subterranean* uncovers a story of true adventure and (if they’re lucky) record-setting discovery. Film subjects will be in attendance for Q&A afterwards. (warning: coarse language)



Open House!

October 12th

630pm-830pm at the Port McNeill Fire Hall



Free fire truck rides for anyone 18+ who fills out an application to join the hall

Gatehouse Theatre

Sunday Matinee Movies

October 1, 2023-Free Bird


October 15, 2023-Paw Patrol

October 29, 2023-Dungeons and Dragons

All Matinees start at 2:00pm




OCTOBER TIDES											
Day	Time	Metres	Feet	jour	heure	mètres	pieds				
1	0208	4.7	15.4	16	0203	4.2	13.8				
	0759	1.2	3.9		0732	1.8	5.9				
	SU 1412	5.1	16.7		MO 1335	4.8	15.7				
	DI 2053	0.6	2.0		LU 2030	1.0	3.3				
2	0256	4.5	14.8	17	0243	4.1	13.5				
	0833	1.6	5.2		0759	2.0	6.6				
	MO 1445	4.9	16.1		TU 1401	4.8	15.7				
	LU 2140	0.7	2.3		MA 2107	1.0	3.3				
3	0345	4.2	13.8	18	0325	4.0	13.1				
	0908	1.9	6.2		0831	2.1	6.9				
	TU 1520	4.7	15.4		WE 1432	4.7	15.4				
	MA 2230	0.9	3.0		ME 2150	1.0	3.3				
4	0438	3.9	12.8	19	0413	3.8	12.5				
	0948	2.3	7.5		0909	2.4	7.9				
	WE 1559	4.4	14.4		TH 1510	4.6	15.1				
	ME 2324	1.2	3.9		JE 2240	1.1	3.6				
5	0542	3.6	11.8	20	0511	3.6	11.8				
	1036	2.6	8.5		0956	2.6	8.5				
	TH 1649	4.1	13.5		FR 1601	4.4	14.4				
	JE				VE 2341	1.3	4.3				
6	0026	1.4	4.6	21	0631	3.5	11.5				
	0713	3.4	11.2		1104	2.7	8.9				
	FR 1144	2.9	9.5		SA 1711	4.2	13.8				
	VE 1755	3.9	12.8		SA						
7	0137	1.6	5.2	22	0053	1.4	4.6				
	0854	3.5	11.5		0801	3.6	11.8				
	SA 1334	2.9	9.5		SU 1242	2.8	9.2				
	SA 1916	3.7	12.1		DI 1838	4.0	13.1				
8	0251	1.6	5.2	23	0208	1.4	4.6				
	0958	3.7	12.1		0911	3.8	12.5				
	SU 1530	2.7	8.9		MO 1433	2.5	8.2				
	DI 2037	3.7	12.1		LU 2006	4.1	13.5				
9	0353	1.6	5.2	24	0315	1.3	4.3				
	1040	3.8	12.5		1001	4.1	13.5				
	MO 1626	2.4	7.9		TU 1549	2.1	6.9				
	LU 2145	3.8	12.5		MA 2124	4.2	13.8				
10	0440	1.5	4.9	25	0409	1.2	3.9				
	1113	4.0	13.1		1042	4.4	14.4				
	TU 1706	2.1	6.9		WE 1645	1.6	5.2				
	MA 2239	4.0	13.1		ME 2232	4.3	14.1				
11	0516	1.5	4.9	26	0455	1.2	3.9				
	1140	4.2	13.8		1119	4.7	15.4				
	WE 1741	1.9	6.2		TH 1735	1.2	3.9				
	ME 2324	4.1	13.5		JE 2331	4.5	14.8				
12	0546	1.4	4.6	27	0535	1.2	3.9				
	1204	4.3	14.1		1153	5.0	16.4				
	TH 1814	1.6	5.2		FR 1821	0.8	2.6				
	JE				VE						
13	0005	4.2	13.8	28	0025	4.6	15.1				
	0613	1.5	4.9		0613	1.4	4.6				
	FR 1227	4.5	14.8		SA 1226	5.1	16.7				
	VE 1847	1.3	4.3		SA 1906	0.5	1.6				
14	0045	4.2	13.8	29	0116	4.6	15.1				
	0639	1.5	4.9		0649	1.6	5.2				
	SA 1249	4.6	15.1		SU 1258	5.2	17.1				
	SA 1921	1.2	3.9		DI 1951	0.4	1.3				
15	0124	4.3	14.1	30	0203	4.5	14.8				
	0705	1.6	5.2		0725	1.8	5.9				
	SU 1312	4.7	15.4		MO 1331	5.1	16.7				
	DI 1955	1.0	3.3		LU 2036	0.5	1.6				
					31	0250	4.3	14.1			
						0801	2.1	6.9			
						TU 1405	4.9	16.1			
					MA 2120 0.6 2.0						



Port McNeill Figure Skating Club

Canskate begins October 11th at 4:00pm. Come early to register on the first day.  
Classes will run Mondays and Wednesdays 4:00pm– 4:45pm



Bottle Drive

Guide/Scout Hall Bottle Drive Sunday October 15. Please have your refundables at the end of your driveway by 1:00pm or drop them off at the Guide/Scout Hall between 1:00-3:00pm. In addition to the usual cans, bottles and tetras we can now take rinsed milk jugs and cartons.

